



Canberra Concrete

0426 372 787

canberraconcrete.com.au

Table of Contents

Sample Color Combinations	
4 - 5	
Seamless Texture Skins	
6 - 11	
Stone Textures	
12 - 23	

Final appearance and color may vary from these photos. This document is only a guide and is not intended to replace practical mock-ups or samples. Work with a contractor to determine the best color and texture/finish combinations. Many factors affect appearance, so representative jobsite samples/mock-ups are recommended prior to construction. **Canberra Concrete accepts no responsibility for color matching or misprints.**



Large Ashlar Cut Slate
Stone Gray Color Hardener / Medium Gray Antique Release

Decorative Stamped Concrete Solutions

Stamped concrete serves as the essential decorative concrete system. Brickform stands out as the industry leader in stamped concrete, boasting over fifty years of expertise in producing high-quality materials for concrete contractors.

- ****Texture****: Surface textures are achieved through patterned stamps and seamless texture skins.
- ****Color****: Integral color is blended directly in the concrete truck, ensuring uniform color throughout the mix. Color Hardener is applied on the surface, offering flexibility to achieve vibrant or pastel shades that aren't possible with integrally colored concrete due to its gray base. Antiquing colors provide depth and variation, while stains can add unique accents to both new and existing concrete projects.
- ****Sealer****: A variety of sealers are available, each offering different levels of color enhancement, surface sheen, and protection for your concrete hardscapes.

****Maintenance & Restoration****: To maintain stamped concrete, it should be cleaned regularly with a broom, water, and a mild detergent like Neutra Clean. Additionally, it is advisable to reseat the concrete with the same sealer every two to three years, or as needed based on environmental conditions.



Ashlar Cut Slate
Solomon Integral Color Doeskin / Light Gray Antique Release / ARTesian Stain



Cedar Wood
Solomon Integral Color Ginger / Desert Tan Antique Release

When selecting colors for stamped concrete, it's advisable to complement your existing hardscape rather than attempting to match a specific color. The sample images provided below will assist you in identifying approximate color ranges for both your base color (Color Hardener or Integral Color) and your release agent. Please review the samples and determine which combinations of base color (Color Hardener or Integral Color) and release agent you prefer.



Blue Stone Texture Skin
Brickform Integral Color Chamois / Desert Tan Antique Release



Blue Stone Texture Skin
Brickform Integral Color Slate / Dark Gray Antique Release



Blue Stone Texture Skin
Brickform Integral Color Leather / Nutmeg Antique Release



Blue Stone Texture Skin
Brickform Integral Color Oak / Medium Gray Antique Release



Blue Stone Texture Skin
Brickform Integral Color Deer Valley / Walnut Antique Release



Blue Stone Texture Skin
Brickform Integral Color Fog / Medium Gray Antique Release

These options align closely with your preferences. In the subsequent pages, identify the pattern that appeals to you and revisit these pages to finalize your color choices. Keep in mind that these are merely sample images. To confirm the accurate color, be sure to request a job site sample from your contractor before installation.



Paladiano Stones of Athens
Sandstone Color Hardener / Nutmeg Antique Release



Paladiano Stones of Athens
Sun Buff Color Hardener / Chestnut Antique Release



Paladiano Stones of Athens
French Gray Color Hardener / Dark Gray Antique Release



Paladiano Stones of Athens
Oyster White Color Hardener / Nutmeg Antique Release



Paladiano Stones of Athens
Smokey Blue Color Hardener / Dark Gray Antique Release



Paladiano Stones of Athens
Cappuccino Color Hardener / Sunbaked Clay Antique Release

SEAMLESS TEXTURE SKINS are innovative stamping tools with feathered edges that can be rotated and layered to create an endless variety of textures. These texture skins can enhance and complement existing patterned textures, or serve as the main tool to achieve a bold, uninterrupted texture.



Rough Stone
Cream Beige Color Hardener / Desert Tan Antique Release



Rough Stone
Cappuccino Color Hardener / Desert Tan Antique Release



Rough Stone
Solomon Integral Color (Custom) / Nutmeg Antique Release



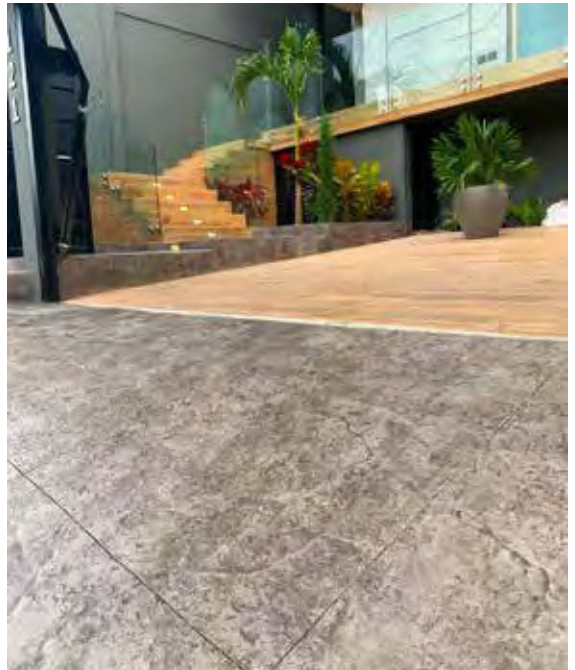
Rough Stone

Solomon Integral Color Ginger / Smokey Beige Antique Release



Rough Stone

Sandy Buff Color Hardener / Nutmeg Antique Release



Rough Stone

Stone Gray Color Hardener / Medium Gray Antique Release



Roman Slate

Solomon Integral Color Bamboo / Dusty Rose Antique Release



Roman Slate

Solomon Integral Color Ginger / Pecos Sand Antique Release
Border: Mission Brown Acid Stain

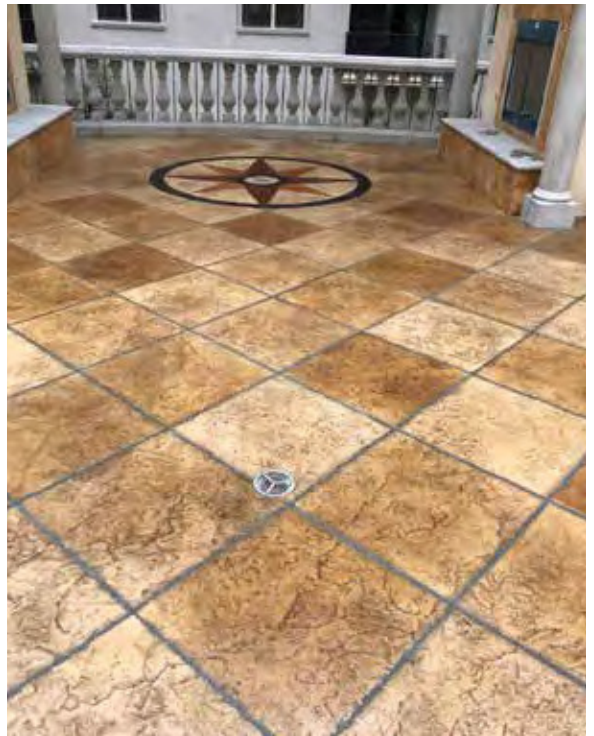


Roman Slate

Adobe Buff Color Hardener / Terra Cotta Antique Release



Roman Slate
Solomon Integral Color Ceramic, Liquid Release



Roman Slate / Saw-Cuts
Cappuccino Color Hardener / Desert Tan Antique Release / Acid Stain



Roman Slate
Solomon Integral Color Ceramic, Liquid Release



Heavy Stone Texture Skin
 Stone Gray Color Hardener (border) / Light Gray Antique Release Agent



Heavy Stone
 Blush-Tone Acid Stain Mahogany / Antique-It Walnut



Sierra Seamless Texture Skin
 Solomon Integral Color Canvas / Desert Tan Antique Release



Desert Slate
 Solomon Integral Color Desert Tan / Terra Cotta Antique Release



Sierra Seamless
 Sunbaked Clay Color Hardener / Autumn Brown Antique Release
 Border - Integral Color Chamois / Lt Gray Antique Release

STONE is a natural material renowned for its inherent beauty. For centuries, it has served as the primary choice for paving and building. Although its rustic charm remains relevant today, its high cost and limitations can be off-putting. However, stone textures for stamped concrete help to lower labor expenses while providing greater creative control and consistency, all without compromising on visual attractiveness.



European Fan

European Fan

Adobe Buff Color Hardener (Saddle Brown border) / Light Gray Antique Release



European Fan

Cappuccino Color Hardener / Desert Tan Antique Release



European Fan

Ash White Color Hardener / Cappuccino Antique Release



European Fan

Sunbaked Clay Color Hardener / Terra Cotta Antique Release (excludes



London Cobble
Sunbaked Clay Color Hardener / Dark Gray Antique Release



London Cobble
Brickform Integral Color Sienna / Walnut Antique Release



London Cobble
Brick Red Color Hardener / Dark Gray Antique Release



Random Stone

Dover Blue Color Hardener / Light Gray Antique Release



Random Stone

Stone Gray Color Hardener / Light Gray Antique Release



Random Stone

Sunbaked Clay Color Hardener / Walnut Antique Release



Lincoln Trail Large Random
Solomon Integral Color Canvas / Nutmeg, White Antique Release



Lincoln Trail Large Random
Solomon Integral Color Ginger / Medium Gray Release / ARTesian Stain



Castle Stone
Solomon Integral Color Sedona / Autumn Brown Antique Release



Castle Stone
Cream Beige Color Hardener / Buff Tan Antique Release



Cobblestone Radius

Solomon Integral Color Rawhide / Medium Gray Antique Release



Cobblestone Radius

Quarry Red Color Hardener / Dark Gray Antique Release



Lotus Blossom Medallion, Cobblestone Radius Tool B

Golden Sandstone Color Hardener / Nutmeg Antique Release / ARTesian Stain



Paladiano Yorkshire Cobble

Stone Gray Color Hardener / Light Gray Antique Release



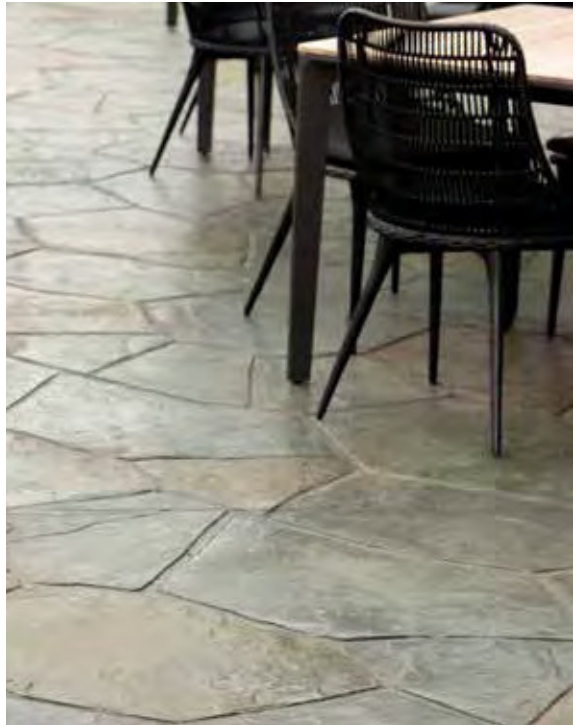
Paladiano Pavimento of Paris

Medium Gray Color Hardener / Light Gray Antique Release / ARTesian Stain



Flagstone

Golden Sandstone Color Hardener / Buff Tan Antique Release



Flagstone

Dover Blue Color Hardener / Liquid Release / ARTesian Stain (dilu



Flagstone

Cream Beige, Terra Cotta Color Hardener / Medium Gray Antique Release



Verona Stone

Adobe Buff Color Hardener/ Smokey Beige Antique Release



Verona Stone

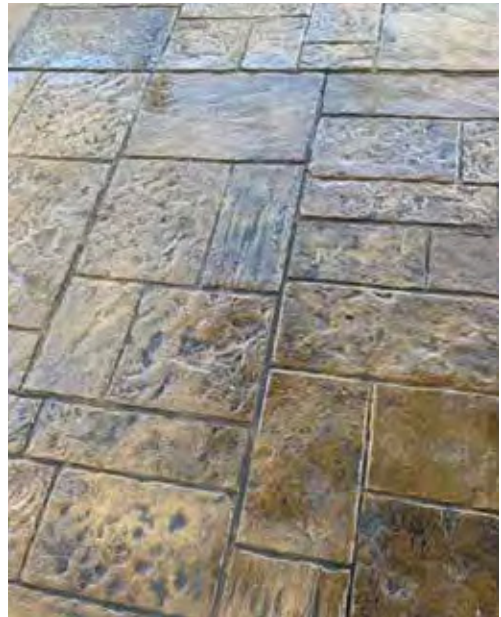
Stone Gray Color Hardener / Light Gray Antique Release



Paladiano Stones of Athens
Brickform Integral Color Slate / Dark Gray Antique-It



Paladiano Stones of Athens
Brickform Integral Color Croissant / Nutmeg Antique Release / ARTesian Sta



Paladiano Stones of Athens
Solomon Integral Color Bamboo / Dark Gray Antique Release



Paladiano Stones of Athens
 Adobe Buff Color Hardener / Medium Gray Antique Release



Paladiano Stones of Athens
 French Gray Color Hardener / Dark Gray Antique Release

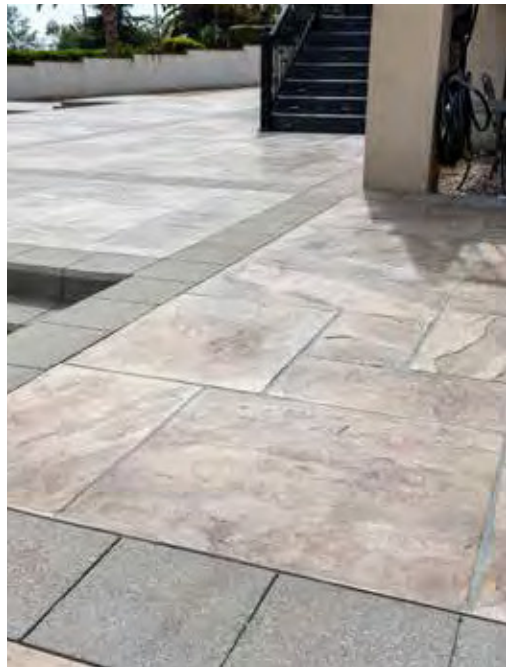


Paladiano Stones of Athens
 Sandstone Color Hardener / Nutmeg Antique Release



Yorkstone Set

Ash White Color Hardener / Sun Buff Antique Release



Yorkstone / Surface Deactivator

Ash White Color Hardener / Desert Tan Antique Release



Rough Cut Ashlar

Solomon Integral Color Driftwood / Medium Gray Antique Release



Rough Cut Ashlar

Solomon Integral Color Thyme / Dark Gray Antique Release



Paladiano Hammered Sofia Stone
Solomon Integral Color Marigold / Autumn Brown Antique-It



Pennsylvania Cobble
Autumn Brown Color Hardener / Dark Gray Antique Release

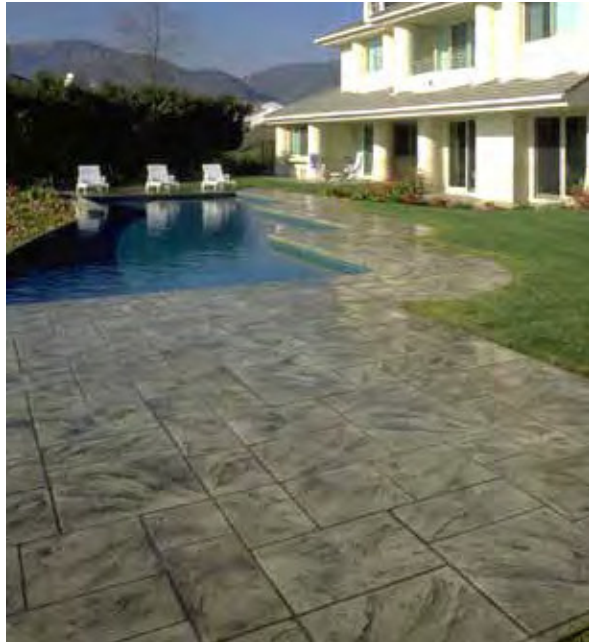


Tuscany Stone
Ash White Color Hardener / Cappuccino Antique Release

SLATE patterns offer a natural texture and are a fantastic choice for both indoor surfaces and outdoor hardscapes. You can achieve the look of slate pavers without the drawbacks of high labor expenses or delicate building materials.



36" Ashlar Cut Slate
Cappuccino Color Hardener / Desert Tan Antique Release



36" Ashlar Cut Slate
Sun Buff Color Hardener / Medium Gray Antique Release



36" Ashlar Cut Slate
Brickform Integral Color Harvest Gold / Pecos Sand Antique Release



Large Ashlar Cut Slate

Desert Tan Color Hardener / Buff Tan Antique Release / ARTesian Stains



Large Ashlar Cut Slate

Ash White Color Hardener / Light Gray Antique Release



Large Ashlar Cut Slate
Adobe Buff Color Hardener / Smokey Beige Antique Release



Large Ashlar Cut Slate
Adobe Buff Color Hardener / Medium Gray Antique Release



Large Ashlar Cut Slate
Solomon Integral Color Marigold / Buff Tan Antique Release



Ashlar Cut Slate

Cappuccino Color Hardener / Autumn Brown Antique Release



Ashlar Cut Slate / Yorkstone

Adobe Buff Color Hardener / Sun Buff Antique Release / ARTesian



Ashlar Cut Slate

Dark Gray Color Hardener / Medium Gray Antique Release



Ashlar Cut Slate
Solomon Integral Color Doeskin / Light Gray Antique Release / AR



Ashlar Cut Slate
Tile Red Color Hardener / Walnut Antique Release



Ashlar Cut Slate / Yorkstone
Solomon Integral Color Ceramic / Smokey Beige Antique Release



Regal Ashlar / Sierra Seamless
Stone Gray Color Hardener / Dark Gray Antique Release



Regal Ashlar
Light Gray Color Hardener / Medium Gray Antique Release



American Ashlar
Solomon Integral Color Doeskin / Desert Tan Antique Release



Herringbone Slate
Solomon Integral Color Cedar / Medium Gray Antique Release



Running Bond Slate
Solomon Integral Color Prairie Tan / Copper Brown Antique Release
Border: ARTesian Stain



12 x 12 Slate
Cream Beige Color Hardener / Desert Tan Antique Release



Paladiano Fractured Cyprus Slate
Golden Sandstone Color Hardener / Light Gray Antique Release / ARTesian Stain



Grand Ashlar
Golden Sandstone Color Hardener / Desert Tan Antique Release

WOOD patterns offer limitless possibilities and are ideal for crafting long-lasting surfaces, suitable for both indoor and outdoor use. These patterns vary from rustic to modern styles, effectively replicating a wide array of natural wood textures.



3" Cedar Wood Flooring
Sandy Buff Color Hardener / Walnut Antique Release



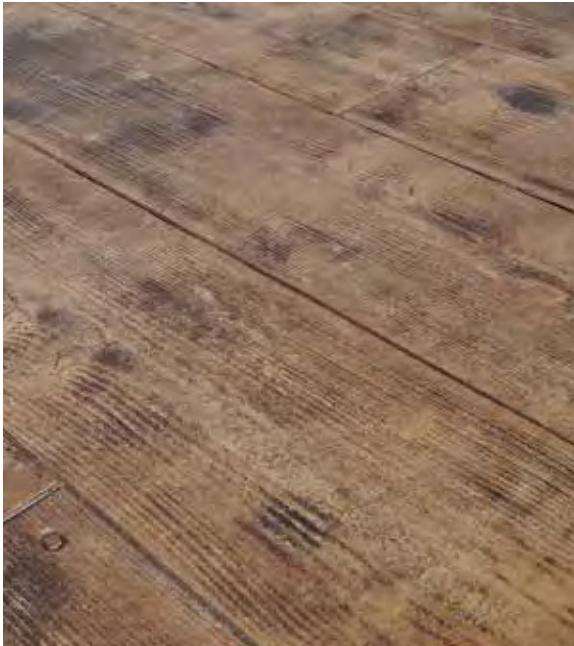
Classic Wood
Solomon Integral Color Rawhide / Medium Gray Antique Release



Classic Wood
Solomon Integral Color Canvas / Chestnut Antique Release



Classic Wood with Nailheads
Cappuccino Color Hardener / Walnut Antique Release /
Aged Walnut ARTesian Stain



Cedar Wood Plank
Cappuccino Color Hardener / Chestnut Antique Release



8" Weathered Wood
Solomon Integral Color Ceramic / Medium Gray Antique Release



Classic Wood
Adobe Buff Color Hardener / Desert Tan Antique Release

BRICK is a classic and attractive finish for interior and exterior floors alike. Whether you are replacing a residential sidewalk or a commercial walkway, Stamped Concrete Brick patterns are used to mimic the natural appearance of brick pavers, while offering the longevity and durability of concrete.



Herringbone Used Brick
Solomon Integral Color Sedona / Light Gray Antique Release /
ARTesian Stain / SM Professional Grade Grout Lines



Herringbone New Brick
Oyster White Color Hardener / Nutmeg Antique Release



Herringbone New Brick / 4x8 New Brick Border
Sunbaked Clay Color Hardener / Chestnut Antique Release



Basket Weave New Brick
Solomon Integral Color Terra Cotta / Medium Gray Release



Canberra Concrete - ACT 2600 | Phone 0426 372 787

